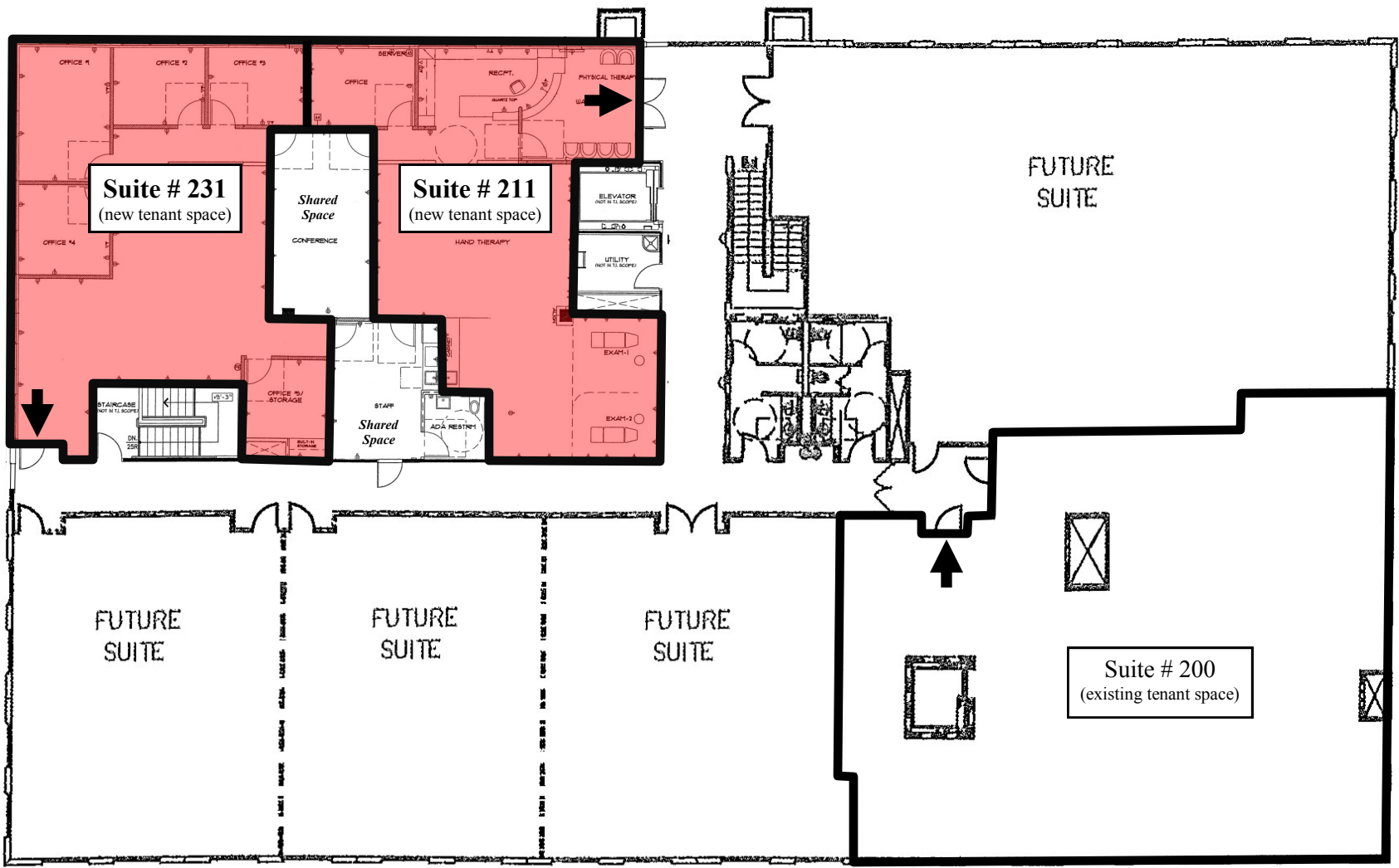
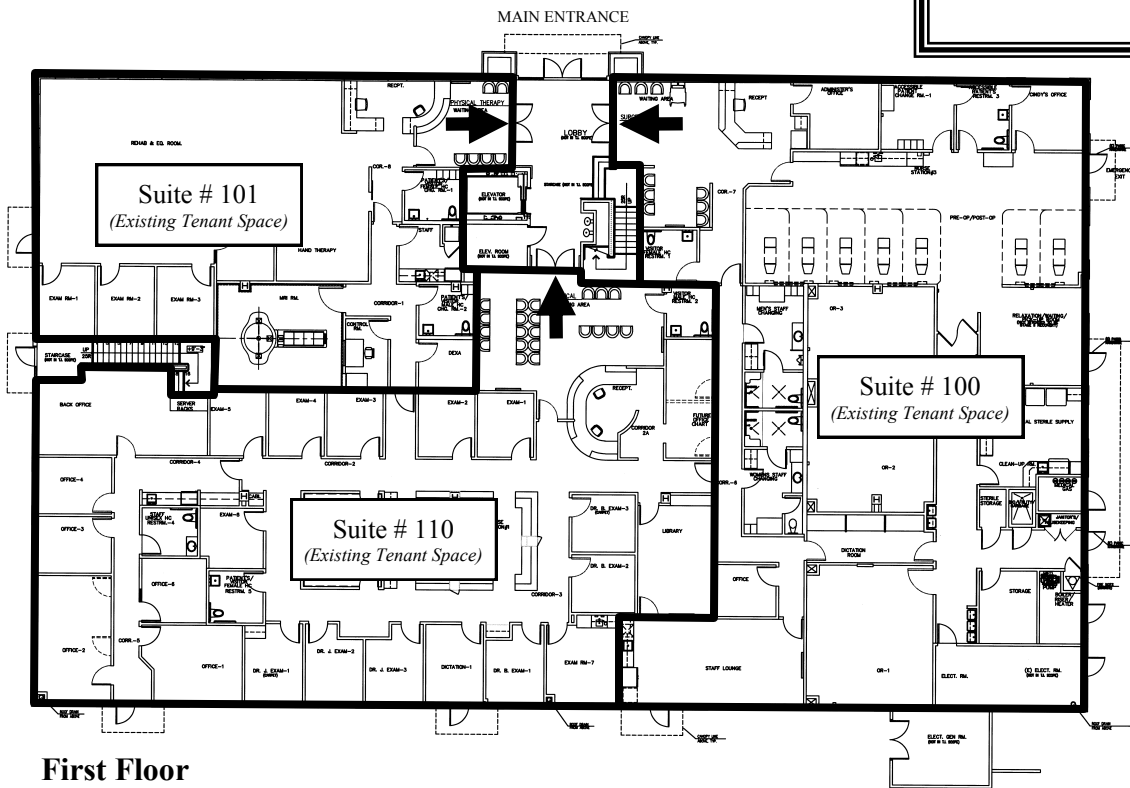


- ADDRESS CHRONOLOGY**
- Building address for Farwell Medical Building was issued on July 21, 2009. (RC)
 - Three (3) first floor suites were issued on April 21, 2010 (RW)
 - One (1) second floor suite issued on September 29, 2011 (RC).
 - Two (2) second floor suites issued on November 14, 2011 (RC).



Second Floor

BUILDING ADDRESS FOR ALL UNITS
39180 FARWELL DR



First Floor

LEGEND:

- Extents of tenant space
- ➔ Main entry into tenant space