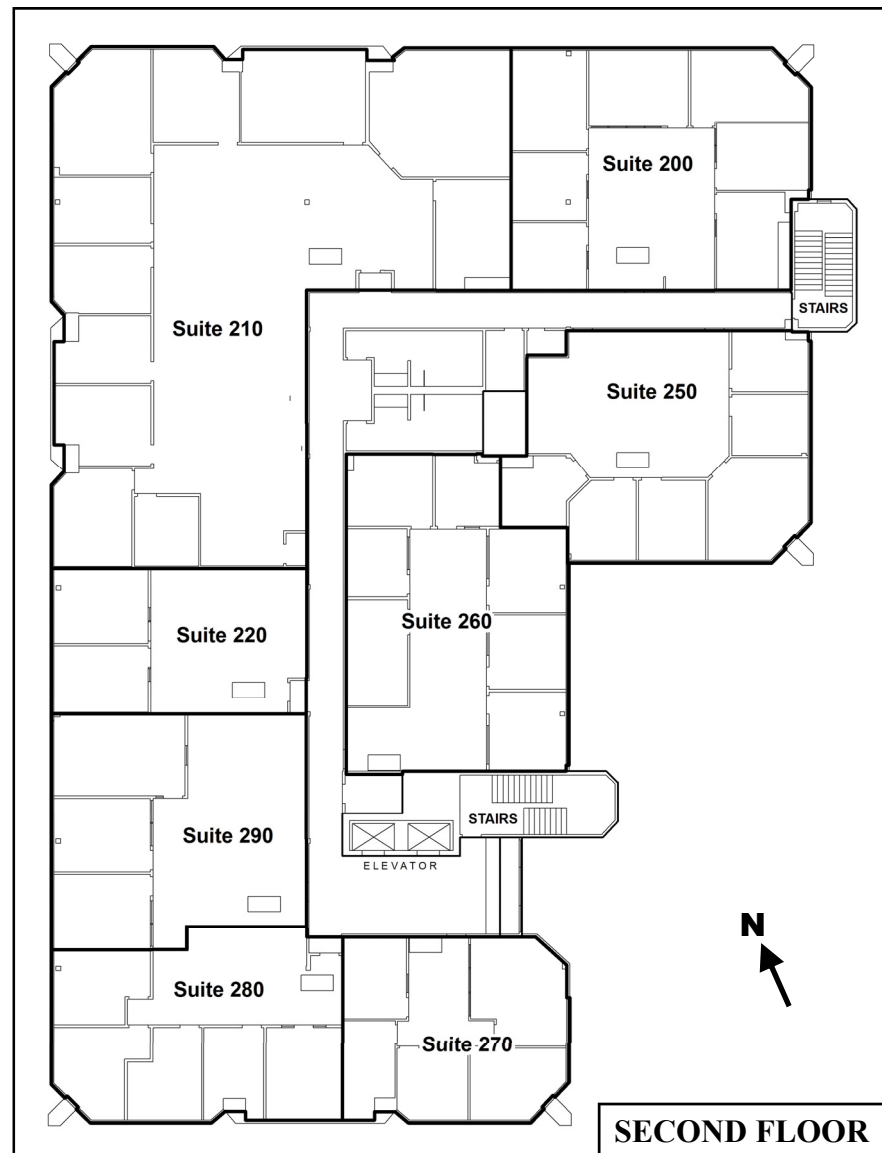


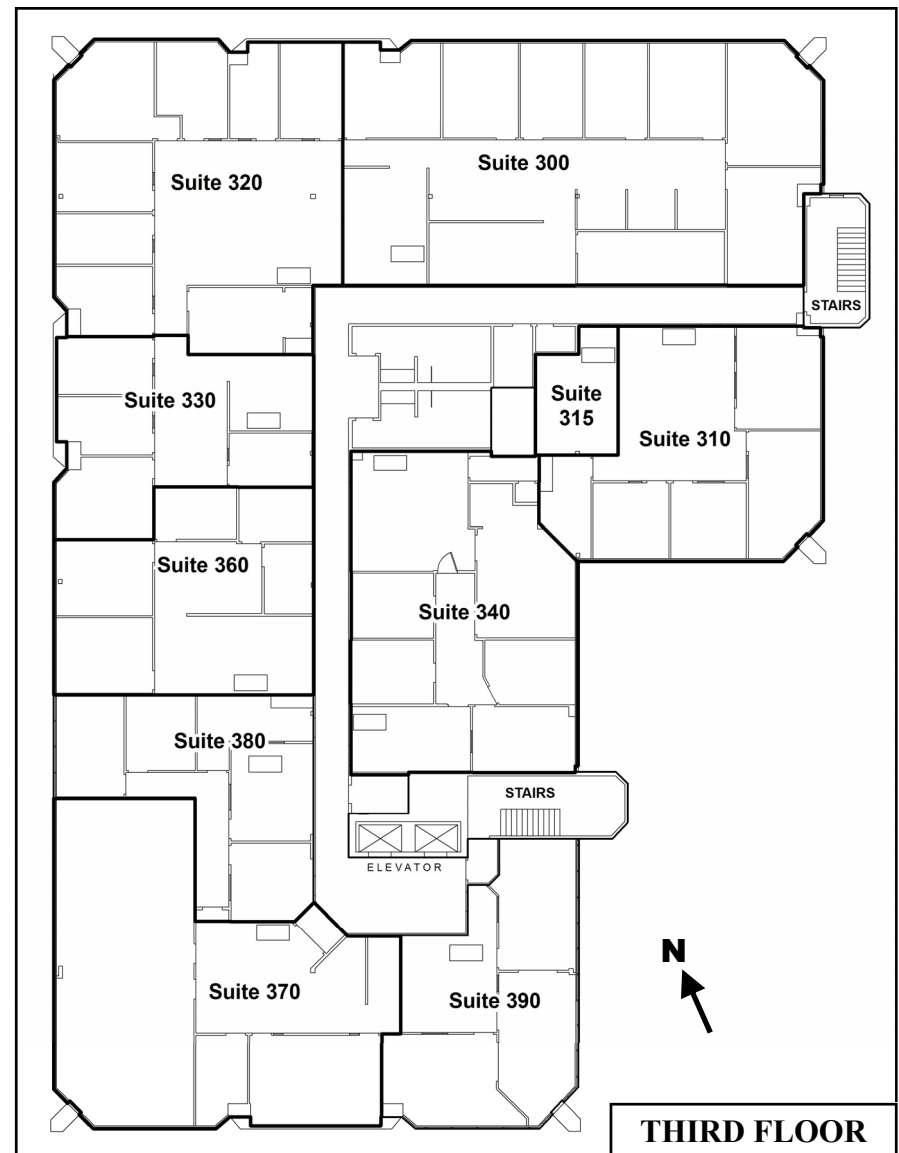
PASEO PADRE PARKWAY

**FIRST FLOOR**



PASEO PADRE PARKWAY

**SECOND FLOOR**



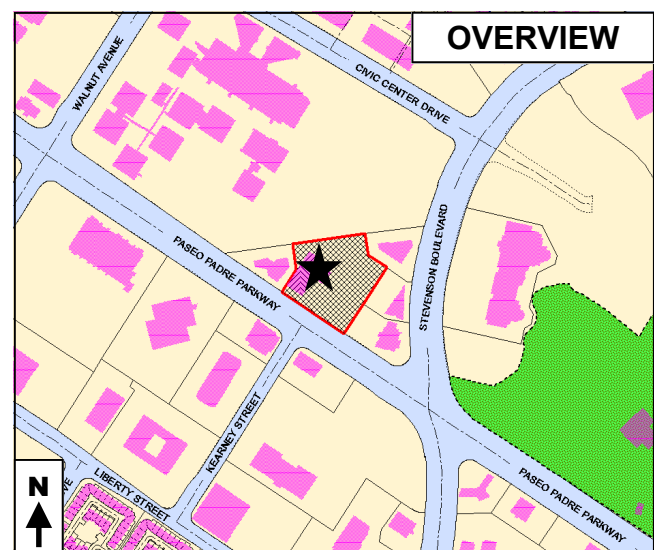
PASEO PADRE PARKWAY

**THIRD FLOOR**

Building Address  
**39510 PASEO PADRE PARKWAY**

FOR ADDRESSING PURPOSES ONLY  
SP72-0002 4/3/2008 RC

**Note:** Suite numbers shall be in sequential pattern. It is recognized that existing suites are currently out of sequence. When these suites are vacated, that they will need reassignment to new suite numbers.



**OVERVIEW**