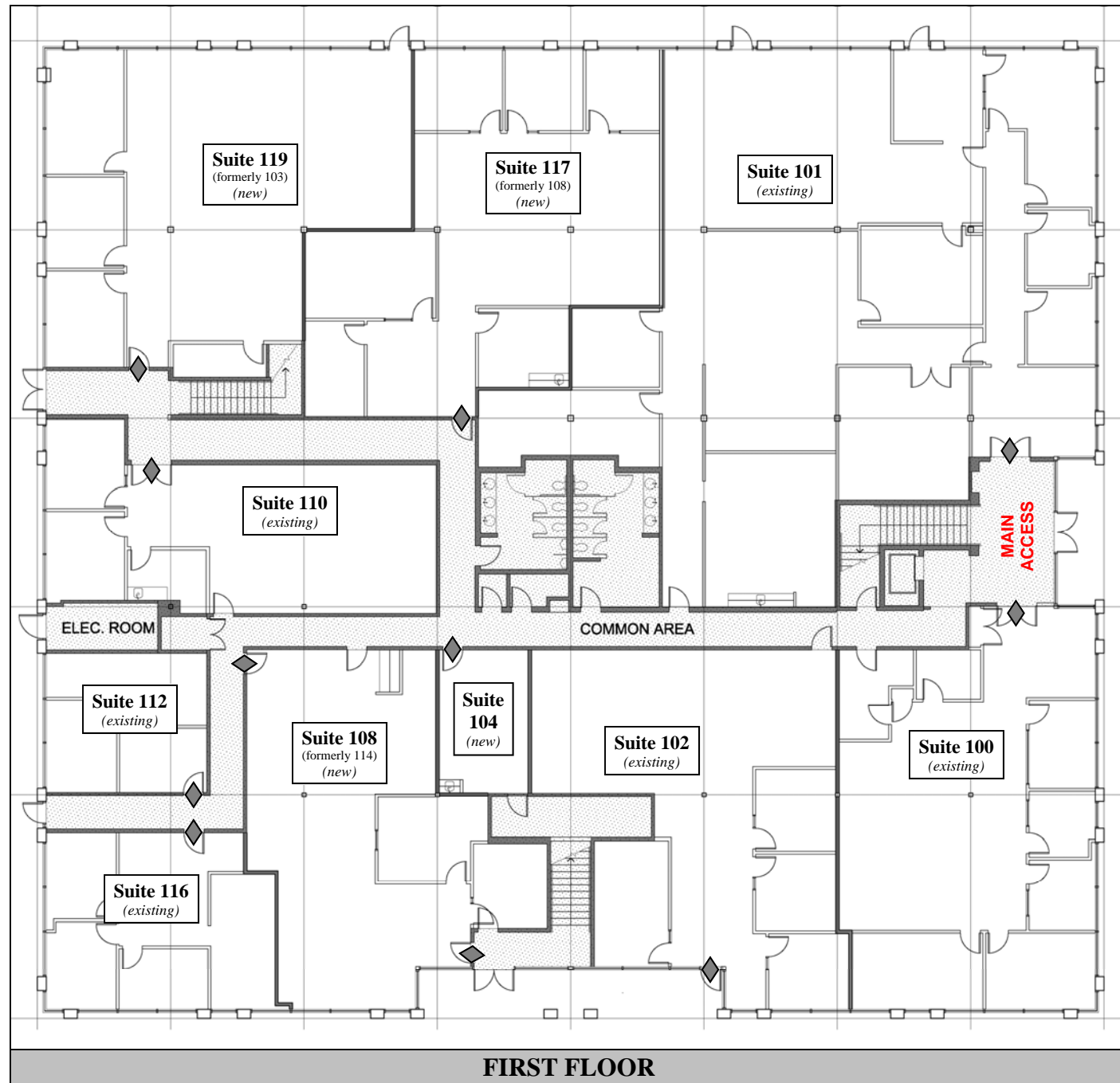


BUILDING ADDRESS FOR ALL UNITS

42808 CHRISTY STREET



FIRST FLOOR

ADDRESS CHRONOLOGY - 42808 CHRISTY STREET

- Initial addressing at time of construction (building address only): Issued 6/10/1981 (RG)
- Suite number (i.e., Suite # 216) for new tenant space: Issued 9/17/2008 (RC)
- Re-numbering of existing tenant spaces and issuance of additional suite numbers for new suites: Issued 4/5/2010 (RW)



FOR ADDRESSING PURPOSES ONLY

SP72-0006 4/5/2010 (RW/RC)

LEGEND:



Main entry to tenant space

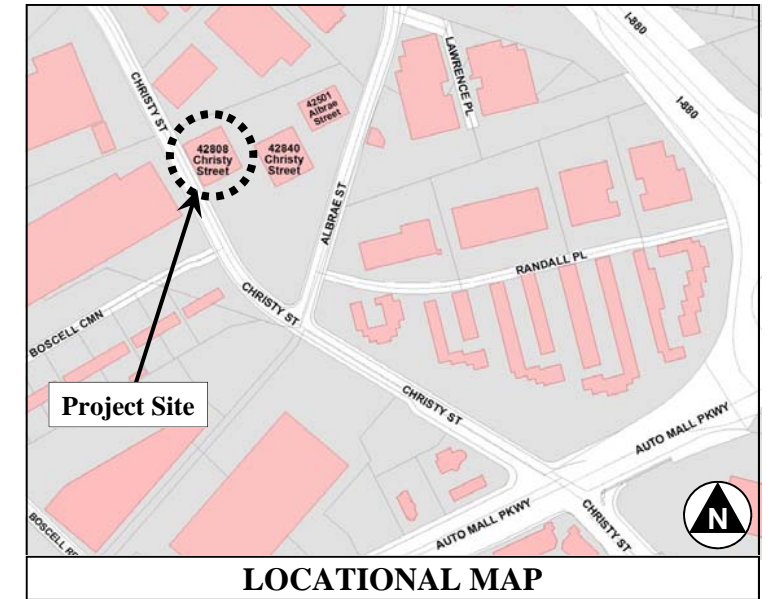
Suite 208

New Suite Numbers (*sample*)

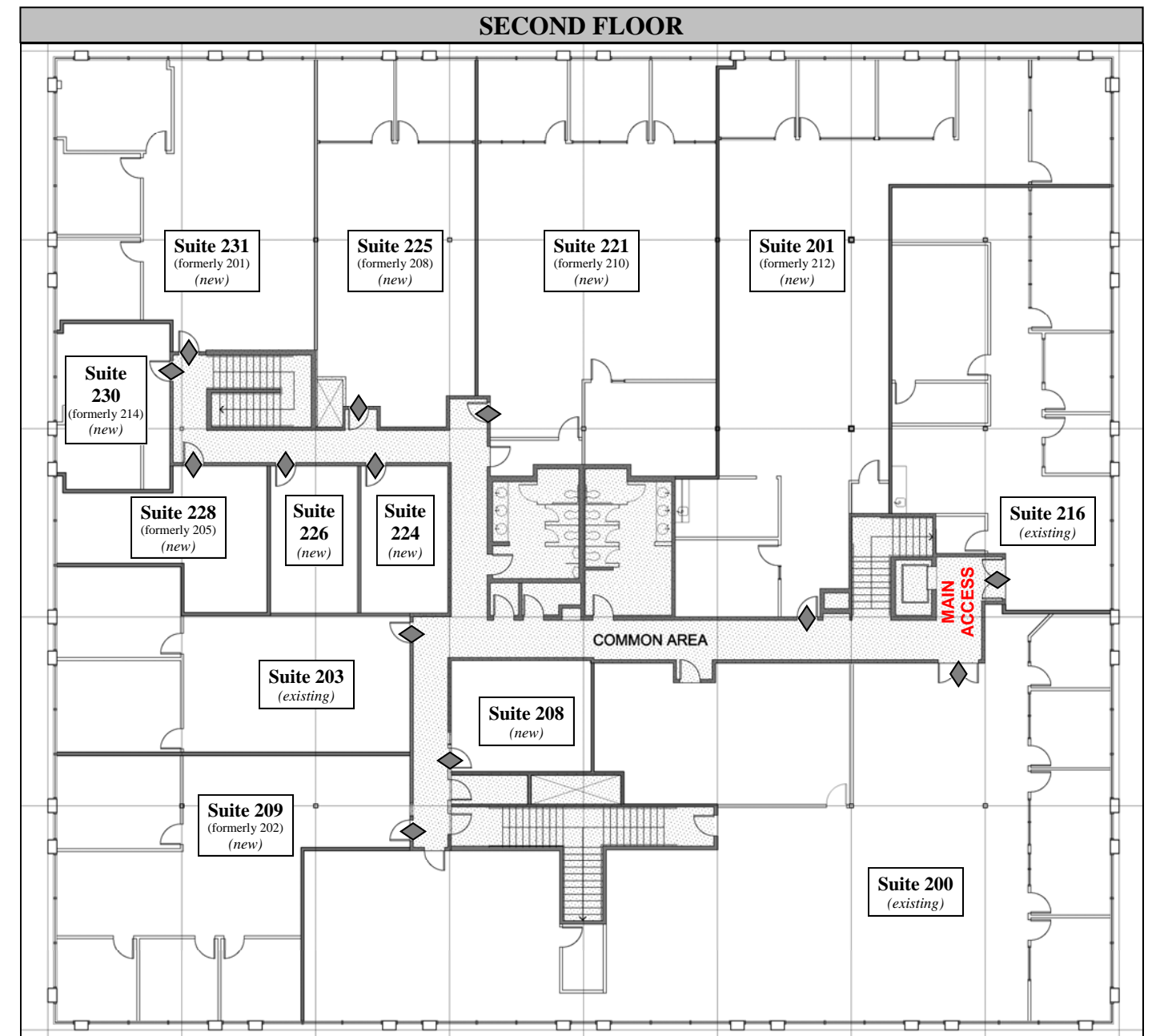
Suite 117
(formerly 108)

New Suite Numbers replacing existing (*sample*)

Note: Suite numbers shall be in sequential pattern. It is recognized that some of the existing suites are out of sequence. When these suites are vacated, they will need reassignment to new suite numbers.



LOCATIONAL MAP



SECOND FLOOR