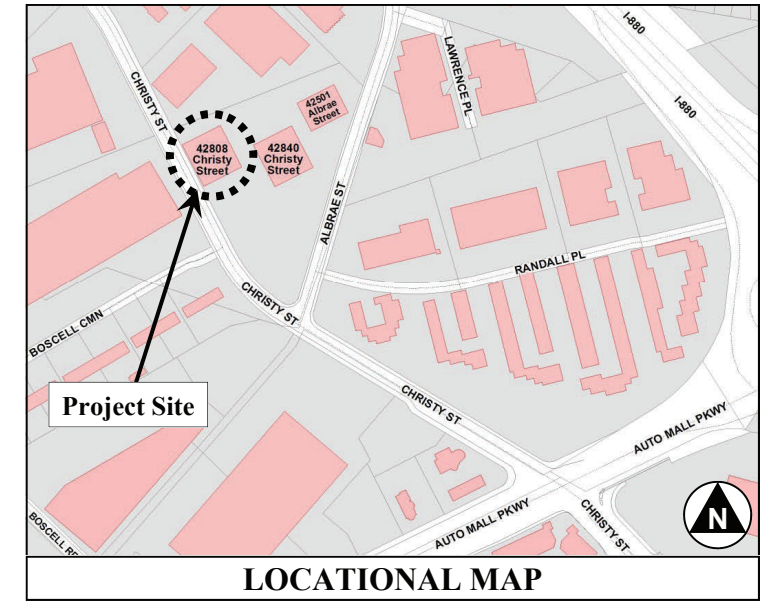


BUILDING ADDRESS FOR ALL UNITS

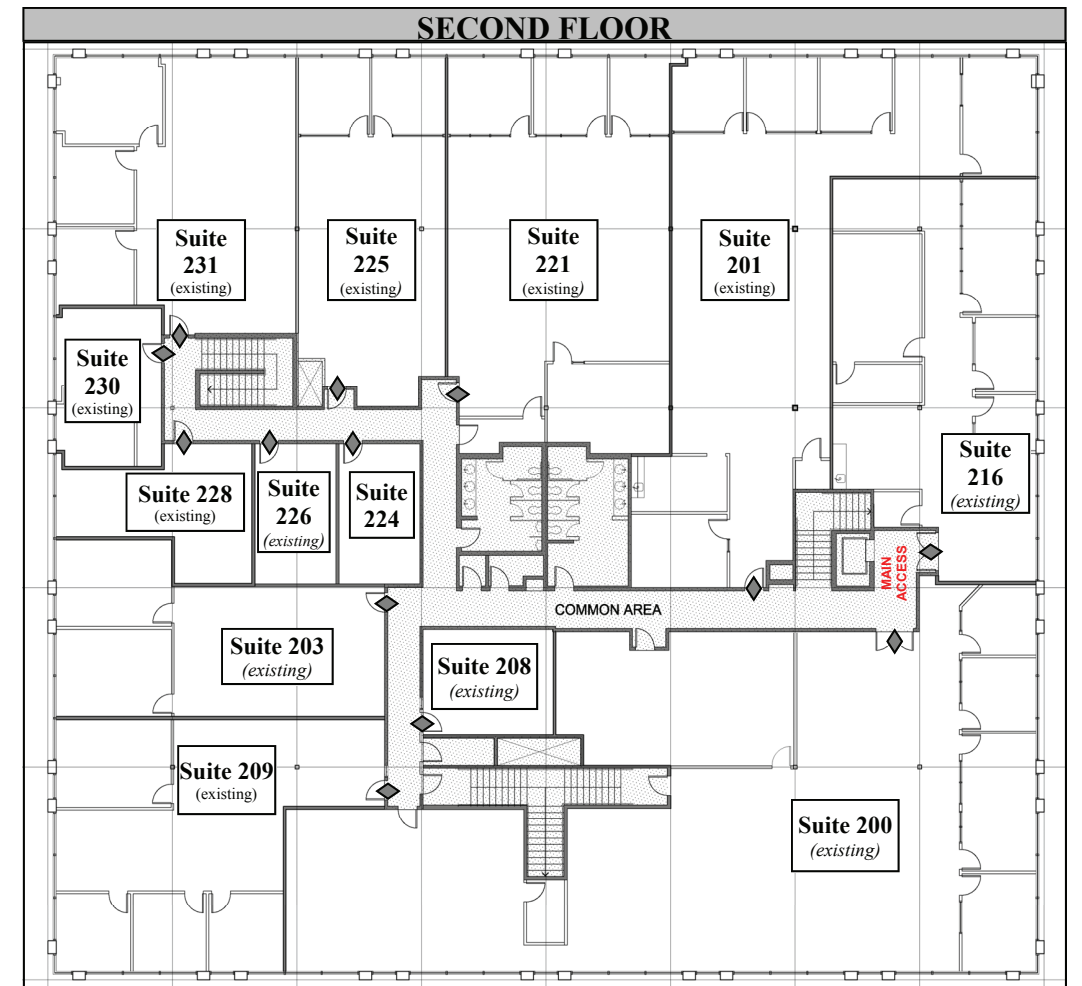
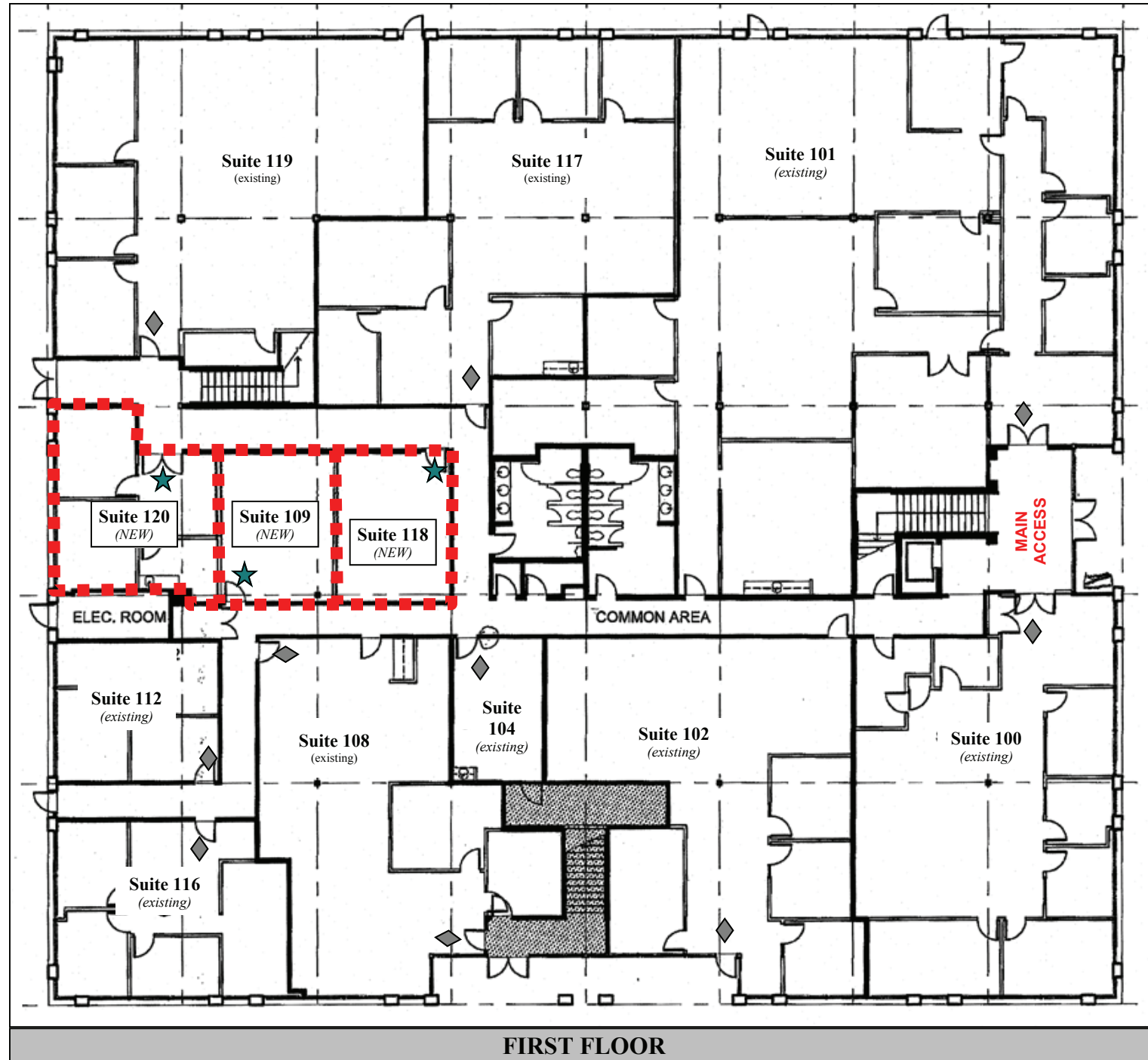
42808 CHRISTY STREET

LEGEND:

- ◆ Main entry to existing tenant space
- ★ Entrance to proposed/new tenant spaces
- ▬ Extents of new tenant spaces
- Suite 120 (NEW) New Suite Numbers (*sample*)



Location of former Suite 110
(To be divided into three new tenant spaces)



FOR ADDRESSING PURPOSES ONLY

SP72-0006 6/23/2010 (RW)