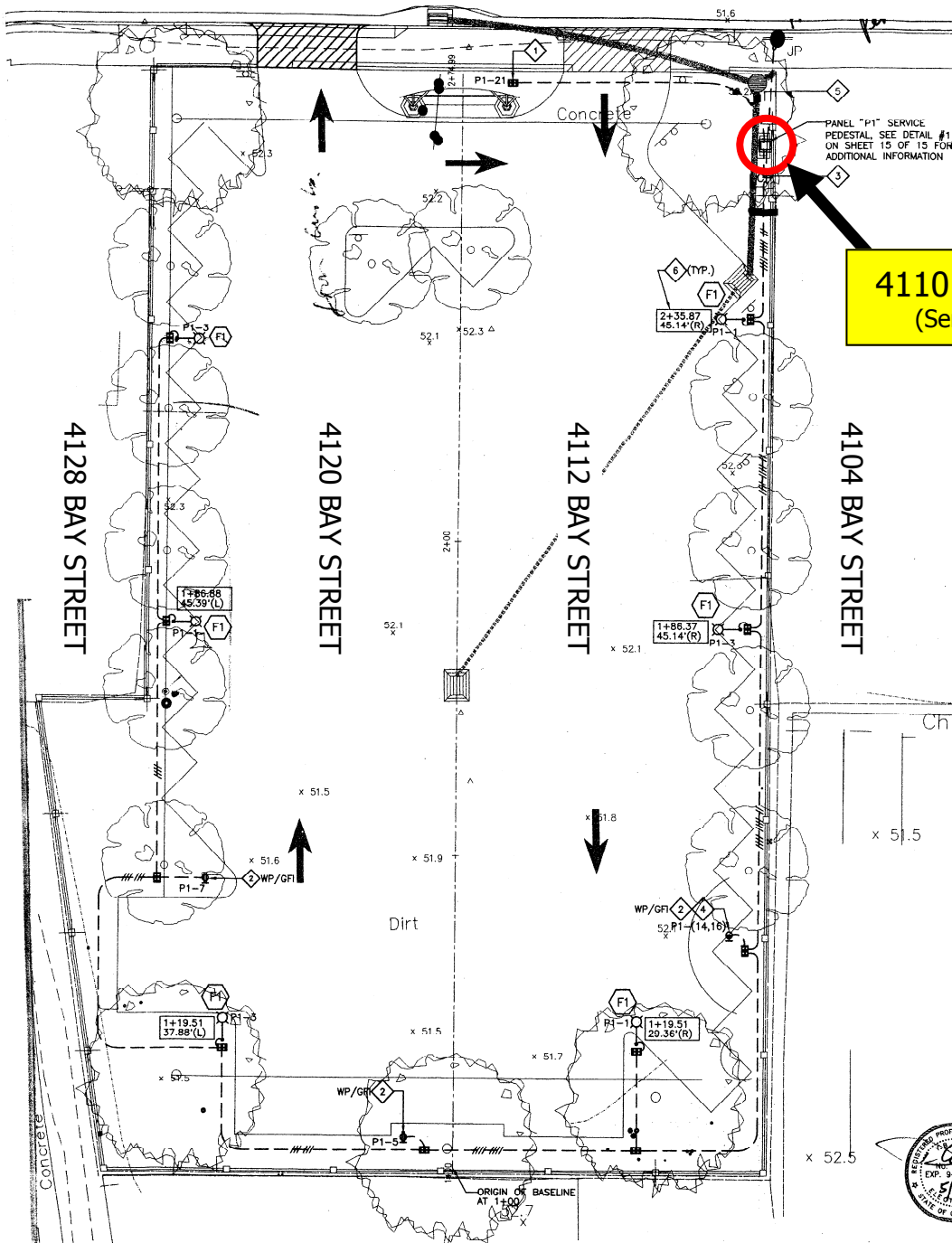


BAY STREET



4110 BAY STREET
(Service Pedestal)



FOR ADDRESSING PURPOSES ONLY
SP72-0023 9/18/2007 RC

LIGHTING FIXTURE SCHEDULE		
TYPE	DESCRIPTION	NOTES
F1	POLE MOUNTED PARKING LUMINAIRE WITH 14'-0" POLE. HEAVY WALL COPPER FREE, CAST ALUMINUM HOUSING, POLISHED AND ANODIZED ALUMINUM FLUTED REFLECTIVE HOOD AND PENDANT STYLE ACRYLIC, REFRACTIVE LENS, LENS AND REFLECTOR ASSEMBLY SHALL BE GASKETED AND ATTACHED TO THE BALLAST HOUSING WITH STAINLESS STEEL CATCH ASSEMBLIES, WITH 250W METAL HALIDE LAMP, 240V HPF BALLAST AND PHOTOCELL CONTROL. POLE AND LUMINAIRE FINISH SHALL BE BLACK (SEE SPECIAL PROVISIONS). POLE SHALL BE BANGOR SERIES 20" OCT. BASE WITH BHC SERIES (ONE-WAY ARM) ALUMINUM ROADWAY ARM.	SEE DETAIL #3 ON SHEET 15 OF 15 FOR MORE INFORMATION. PROVIDE PHOTOCELL ON LIGHT POLE NEAREST TO SERVICE PEDESTAL ONLY.
	ANTIQUE STREET LIGHTING BH30PC/CVR30 SERIES OR APPROVED EQUAL	

ACKERMAN PRACTICON
CONSOLIDATED TECHNICAL SERVICES
801 E. CHARLESTON ROAD PALO ALTO, CA 94303
650.985.1000 FAX: 650.494.9312
A-P PROJECT NUMBER: 07051.01



<p>BAY STREET PARKING LOT LIGHTING & ELECTRICAL PLAN</p>		DESIGNED BY: DK
		DRAWN BY: CO
<p>CITY OF FREMONT COMMUNITY DEVELOPMENT DEPARTMENT</p>		DATE: 05-17-07
		PROJECT NO.: 8509(PWC)
APPROVED _____ SENIOR ENGINEER		CAD FILE: E3.dwg
DATE _____ RECOMMENDED _____ PROJECT MANAGER		SHEET 14 OF 15