



Date: December 19, 2022

To: Bill O'Brien
 Lennar Homes
 2603 Camino Ramon Ste 525
 San Ramon, CA 94583
 AND
 Logan Krah
 Lennar Homes
 2603 Camino Ramon Ste 525
 San Ramon, CA 94583

Requestor: KREYN
 Discretionary Rev: SAM2022-00006;
 PLN2014-00338
 Permitting File#: n/a
 SP#: 72-0204
 APN#: 507 017000103
Zip Code: 94536
 Fire ESZ | Box/S-Dist: 02 - 636 | 2-9 / 86D5
Address For: Residential Subdivision

Re: Addresses for Tract 8205 (Niles Gateway)

To Whom It May Concern:

In response to your request for addresses needed for a new residential subdivision, a total of one hundred (100) new addresses have been assigned. And, as part of this addressing action, three (3) existing addresses (i.e., 37899, 37935 and 38099 Niles Blvd) have been rescinded. For a full inventory and description of the addresses, please refer to Table "A" for a list of authorized addresses. Table "B" contains a listing of the rescinded addresses. Table "C" contains a list of authorized street names for the Niles Gateway. The enclosed Addressing Plan illustrates the proper use and placement of the new addresses.

Electronic copies of this letter and documentation will be posted to the City's web site at <https://city.fremont.gov/addressingprojects> within 10 business days. The files will be stored under SP 72-0204.

Documents available on Web Site:



X	Notification Letter
X	Address Plan (map)
	AutoCAD Drawing

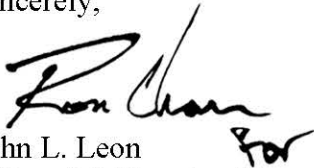
	Address Table
	G.I.S. Layer

In accordance with Title 15 (Buildings and Construction) Chapter 15.55 (House Numbering) of the Fremont Municipal Code, this letter serves as the notice of the addressing action affecting your property. The new address must be in use within ten (10) days of the receipt of this letter. For information on the size and location of address numbers on a building, please refer to the enclosed information sheet titled "ADDRESSING – Property Owner Responsibilities" and to Chapter 15.50 (Building Security) of the Title 15 (Buildings and Construction).

You will need to update your address records and outside address numbers as soon as possible for the purpose of rapid identification of your property in the event of an emergency. Any occupants and property owner of this parcel should review and update their records that are registered with the City (such as for building permit and/or business tax purposes). And, by copy of this letter, we are notifying the below-listed agencies and utility companies. However, be aware that some agencies may not update their records until notified by the property owner. Therefore, it is your responsibility to make sure that the appropriate agencies or businesses acknowledge the correct addresses.

If you have any questions concerning this matter, please contact Ron Chan at (phone) 510-494-4832 or (e-mail) rchan@fremont.gov.

Sincerely,



John L. Leon
GIS and Addressing Manager

Enclosures (hardcopy/paper): Address Plan - map (1) and Property Owner Responsibilities Information Sheet.

cc: **Sent via e-mail:**

Alameda County Assessor's Office
Alameda County Registrar of Voters
Alameda County Regional Emergency Communication Center - Dublin
Alameda County Water District
Alameda County 911 (Coordinator)
Alameda County Main Post Office (Address Mgmt. Systems Manager)
AT&T – Database Center / SLIC
Cooperative Strategies/Dolinka Group
Fremont Unified School District (Facilities Director)
Fremont Main Post Office (Station Manager) – zip code area 94536 / 94537 / 94555
Republic Services
US Postal Service / AMS
Lynx Technologies
Pacific Gas & Electric (Service Planning Dept.)
AT&T – Engineering
Union Sanitary District
Fremont Community Development – Building & Safety
Fremont Community Development – Fire & Life Safety
Fremont Fire – Operations
Fremont Fire – Prevention
Fremont Plans & Permits
Fremont Public Works –
Fremont Environmental Services

LOCATIONAL MAP

(For reference only – see official addressing map for actual/correct address)

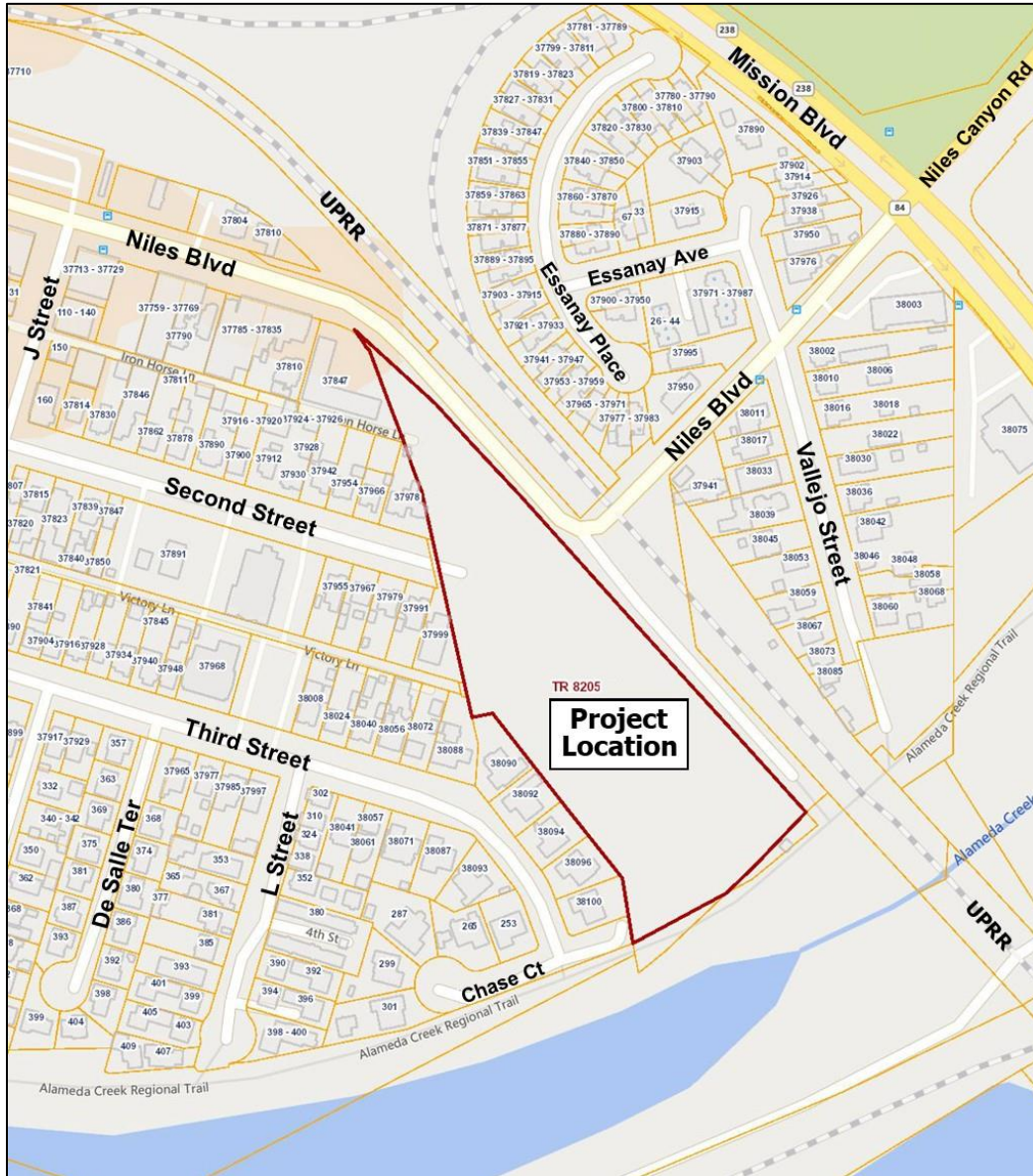


TABLE A: Authorized Addresses

Record	Address No.	Street Name	Unit No.	Zip Code	Bldg	Floor	Subdivision No.	Land Lot	Condo Lot	Address Type	Address Status
1	37904	Locomotive Cmn		94536			TR 8205	Lot G		Common Area	Assigned
2	37904	Locomotive Cmn	Elec-1	94536			TR 8205	Lot G		Electrical	Assigned
3	37904	Locomotive Cmn	Irr-1	94536			TR 8205	Lot G		Irrigation	Assigned
4	38095	Locomotive Cmn		94536			TR 8205	Lot J		Common Area	Assigned
5	38095	Locomotive Cmn	Elec-1	94536			TR 8205	Lot J		Electrical	Assigned
6	37903	Niles Blvd		94536	Bldg 1		TR 8205	Lot 1	1	Condominium	Assigned
7	37909	Niles Blvd		94536	Bldg 1		TR 8205	Lot 1	2	Condominium	Assigned
8	37915	Niles Blvd		94536	Bldg 1		TR 8205	Lot 1	3	Condominium	Assigned
9	37921	Niles Blvd		94536	Bldg 1		TR 8205	Lot 1	4	Condominium	Assigned
10	37927	Niles Blvd		94536	Bldg 1		TR 8205	Lot 1	5	Condominium	Assigned
11	37933	Niles Blvd		94536	Bldg 1		TR 8205	Lot 2	6	Condominium	Assigned
12	37939	Niles Blvd		94536	Bldg 2		TR 8205	Lot 2	7	Condominium	Assigned
13	37945	Niles Blvd		94536	Bldg 2		TR 8205	Lot 2	8	Condominium	Assigned
14	37951	Niles Blvd		94536	Bldg 2		TR 8205	Lot 2	9	Condominium	Assigned
15	37957	Niles Blvd		94536	Bldg 2		TR 8205	Lot 2		Parcel Bldg	Assigned
16	38001	Cinematic Cmn		94536	Bldg 2		TR 8205	Lot 3	9	Condominium	Assigned
17	38007	Cinematic Cmn		94536	Bldg 3		TR 8205	Lot 3	10	Condominium	Assigned
18	38013	Cinematic Cmn		94536	Bldg 3		TR 8205	Lot 3	11	Condominium	Assigned
19	38019	Cinematic Cmn		94536	Bldg 3		TR 8205	Lot 3	12	Condominium	Assigned
20	38025	Cinematic Cmn		94536	Bldg 3		TR 8205	Lot 3	13	Condominium	Assigned
21	38031	Cinematic Cmn		94536	Bldg 3		TR 8205	Lot 3		Parcel Bldg	Assigned
22	38037	Cinematic Cmn		94536	Bldg 3		TR 8205	Lot 4	14	Condominium	Assigned
23	38043	Cinematic Cmn		94536	Bldg 4		TR 8205	Lot 4	15	Condominium	Assigned
24	38049	Cinematic Cmn		94536	Bldg 4		TR 8205	Lot 4	16	Condominium	Assigned
25	38055	Cinematic Cmn		94536	Bldg 4		TR 8205	Lot 4	17	Condominium	Assigned
26	38061	Cinematic Cmn		94536	Bldg 4		TR 8205	Lot 4	18	Condominium	Assigned
27	38067	Cinematic Cmn		94536	Bldg 4		TR 8205	Lot 4		Parcel Bldg	Assigned
28	103	Sennett Ter		94536	Bldg 4		TR 8205	Lot 5	19	Condominium	Assigned
29	109	Sennett Ter		94536	Bldg 5		TR 8205	Lot 5	20	Condominium	Assigned
30	115	Sennett Ter		94536	Bldg 5		TR 8205	Lot 5	21	Condominium	Assigned
31	121	Sennett Ter		94536	Bldg 5		TR 8205	Lot 5	22	Condominium	Assigned
32	127	Sennett Ter		94536	Bldg 5		TR 8205	Lot 5	23	Condominium	Assigned
33	133	Sennett Ter		94536	Bldg 5		TR 8205	Lot 5		Parcel Bldg	Assigned
34	102	Sennett Ter		94536	Bldg 5		TR 8205	Lot 6	24	Condominium	Assigned
35	108	Sennett Ter		94536	Bldg 6		TR 8205	Lot 6	25	Condominium	Assigned
36	114	Sennett Ter		94536	Bldg 6		TR 8205	Lot 6	26	Condominium	Assigned
37	120	Sennett Ter		94536	Bldg 6		TR 8205	Lot 6	27	Condominium	Assigned
38	126	Sennett Ter		94536	Bldg 6		TR 8205	Lot 6	28	Condominium	Assigned
39	132	Sennett Ter		94536	Bldg 6		TR 8205	Lot 6		Parcel Bldg	Assigned

Record	Address No.	Street Name	Unit No.	Zip Code	Bldg	Floor	Subdivision No.	Land Lot	Condo Lot	Address Type	Address Status
40	179	Sierra Ter		94536	Bldg 6		TR 8205	Lot 7	29	Condominium	Assigned
41	185	Sierra Ter		94536	Bldg 7		TR 8205	Lot 7	30	Condominium	Assigned
42	191	Sierra Ter		94536	Bldg 7		TR 8205	Lot 7	31	Condominium	Assigned
43	197	Sierra Ter		94536	Bldg 7		TR 8205	Lot 7		Parcel Bldg	Assigned
44	166	Sierra Ter		94536	Bldg 7		TR 8205	Lot 8	32	Condominium	Assigned
45	172	Sierra Ter		94536	Bldg 8		TR 8205	Lot 8	33	Condominium	Assigned
46	178	Sierra Ter		94536	Bldg 8		TR 8205	Lot 8	34	Condominium	Assigned
47	184	Sierra Ter		94536	Bldg 8		TR 8205	Lot 8	35	Condominium	Assigned
48	190	Sierra Ter		94536	Bldg 8		TR 8205	Lot 8	36	Condominium	Assigned
49	196	Sierra Ter		94536	Bldg 8		TR 8205	Lot 8		Parcel Bldg	Assigned
50	135	Quincy Ter		94536	Bldg 8		TR 8205	Lot 9	37	Condominium	Assigned
51	141	Quincy Ter		94536	Bldg 9		TR 8205	Lot 9	38	Condominium	Assigned
52	147	Quincy Ter		94536	Bldg 9		TR 8205	Lot 9	39	Condominium	Assigned
53	153	Quincy Ter		94536	Bldg 9		TR 8205	Lot 9	40	Condominium	Assigned
54	159	Quincy Ter		94536	Bldg 9		TR 8205	Lot 9	41	Condominium	Assigned
55	165	Quincy Ter		94536	Bldg 9		TR 8205	Lot 9		Parcel Bldg	Assigned
56	165	Quincy Ter	Elec-1	94536	Bldg 9		TR 8205	Lot 9		Electrical	Assigned
57	128	Quincy Ter		94536	Bldg 10		TR 8205	Lot 10	42	Condominium	Assigned
58	134	Quincy Ter		94536	Bldg 10		TR 8205	Lot 10	43	Condominium	Assigned
59	140	Quincy Ter		94536	Bldg 10		TR 8205	Lot 10	44	Condominium	Assigned
60	146	Quincy Ter		94536	Bldg 10		TR 8205	Lot 10		Parcel Bldg	Assigned
61	152	Quincy Ter		94536	Bldg 10		TR 8205	Lot 11	45	Condominium	Assigned
62	158	Quincy Ter		94536	Bldg 11		TR 8205	Lot 11	46	Condominium	Assigned
63	164	Quincy Ter		94536	Bldg 11		TR 8205	Lot 11	47	Condominium	Assigned
64	170	Quincy Ter		94536	Bldg 11		TR 8205	Lot 11		Parcel Bldg	Assigned
65	139	Sennett Ter		94536	Bldg 11		TR 8205	Lot 12	48	Condominium	Assigned
66	145	Sennett Ter		94536	Bldg 12		TR 8205	Lot 12	49	Condominium	Assigned
67	151	Sennett Ter		94536	Bldg 12		TR 8205	Lot 12	50	Condominium	Assigned
68	157	Sennett Ter		94536	Bldg 12		TR 8205	Lot 12	51	Condominium	Assigned
69	163	Sennett Ter		94536	Bldg 12		TR 8205	Lot 12	52	Condominium	Assigned
70	169	Sennett Ter		94536	Bldg 12		TR 8205	Lot 12		Parcel Bldg	Assigned
71	138	Sennett Ter		94536	Bldg 12		TR 8205	Lot 13	53	Condominium	Assigned
72	144	Sennett Ter		94536	Bldg 13		TR 8205	Lot 13	54	Condominium	Assigned
73	150	Sennett Ter		94536	Bldg 13		TR 8205	Lot 13	55	Condominium	Assigned
74	156	Sennett Ter		94536	Bldg 13		TR 8205	Lot 13	56	Condominium	Assigned
75	162	Sennett Ter		94536	Bldg 13		TR 8205	Lot 13	57	Condominium	Assigned
76	168	Sennett Ter		94536	Bldg 13		TR 8205	Lot 13		Parcel Bldg	Assigned
77	101	Limelight Ter		94536	Bldg 13		TR 8205	Lot 14	58	Condominium	Assigned
78	107	Limelight Ter		94536	Bldg 14		TR 8205	Lot 14	59	Condominium	Assigned
79	113	Limelight Ter		94536	Bldg 14		TR 8205	Lot 14	60	Condominium	Assigned
80	119	Limelight Ter		94536	Bldg 14		TR 8205	Lot 14		Parcel Bldg	Assigned

Record	Address No.	Street Name	Unit No.	Zip Code	Bldg	Floor	Subdivision No.	Land Lot	Condo Lot	Address Type	Address Status
81	100	Limelight Ter		94536	Bldg 14		TR 8205	Lot 15	61	Condominium	Assigned
82	106	Limelight Ter		94536	Bldg 15		TR 8205	Lot 15	62	Condominium	Assigned
83	112	Limelight Ter		94536	Bldg 15		TR 8205	Lot 15	63	Condominium	Assigned
84	118	Limelight Ter		94536	Bldg 15		TR 8205	Lot 15		Parcel Bldg	Assigned
85	125	Limelight Ter		94536	Bldg 15		TR 8205	Lot 16	64	Condominium	Assigned
86	131	Limelight Ter		94536	Bldg 16		TR 8205	Lot 16	65	Condominium	Assigned
87	137	Limelight Ter		94536	Bldg 16		TR 8205	Lot 16	66	Condominium	Assigned
88	143	Limelight Ter		94536	Bldg 16		TR 8205	Lot 16		Parcel Bldg	Assigned
89	124	Limelight Ter		94536	Bldg 16		TR 8205	Lot 17	67	Condominium	Assigned
90	130	Limelight Ter		94536	Bldg 17		TR 8205	Lot 17	68	Condominium	Assigned
91	136	Limelight Ter		94536	Bldg 17		TR 8205	Lot 17	69	Condominium	Assigned
92	142	Limelight Ter		94536	Bldg 17		TR 8205	Lot 17		Parcel Bldg	Assigned
93	149	Limelight Ter		94536	Bldg 17		TR 8205	Lot 18	70	Condominium	Assigned
94	155	Limelight Ter		94536	Bldg 18		TR 8205	Lot 18	71	Condominium	Assigned
95	161	Limelight Ter		94536	Bldg 18		TR 8205	Lot 18	72	Condominium	Assigned
96	167	Limelight Ter		94536	Bldg 18		TR 8205	Lot 18		Parcel Bldg	Assigned
97	148	Limelight Ter		94536	Bldg 18		TR 8205	Lot 19	73	Condominium	Assigned
98	154	Limelight Ter		94536	Bldg 19		TR 8205	Lot 19	74	Condominium	Assigned
99	160	Limelight Ter		94536	Bldg 19		TR 8205	Lot 19	75	Condominium	Assigned
100	166	Limelight Ter		94536	Bldg 19		TR 8205	Lot 19		Parcel Bldg	Assigned

TABLE B: Rescinded Addresses

Record	Address No.	Street Name	Unit No.	Zip Code	Bldg	Floor	Subdivision No.	Land Lot	Condo Lot	Address Type	Address Status
1	37899	Niles Blvd		94536						Parcel	Rescinded
2	37935	Niles Blvd		94536						Cell Site	Rescinded
3	38099	Niles Blvd		94536						Utility	Rescinded

TABLE C: Authorized Street Names

Record	Subdivision No.	Land Lot	Street Name
1	TR 8205	Parcel F	Cinematic Cmn
2	TR 8205	Parcels A & B	Dollar Cmn
3	TR 8205	Parcels A, D & E	Limelight Ter
4	TR 8205	Parcel A	Locomotive Cmn
5	TR 8205	Parcel A	Quincy Ter
6	TR 8205	Parcels A & C	Sennett Ter
7	TR 8205	Parcel B	Sierra Ter