



LOCATIONAL MAP

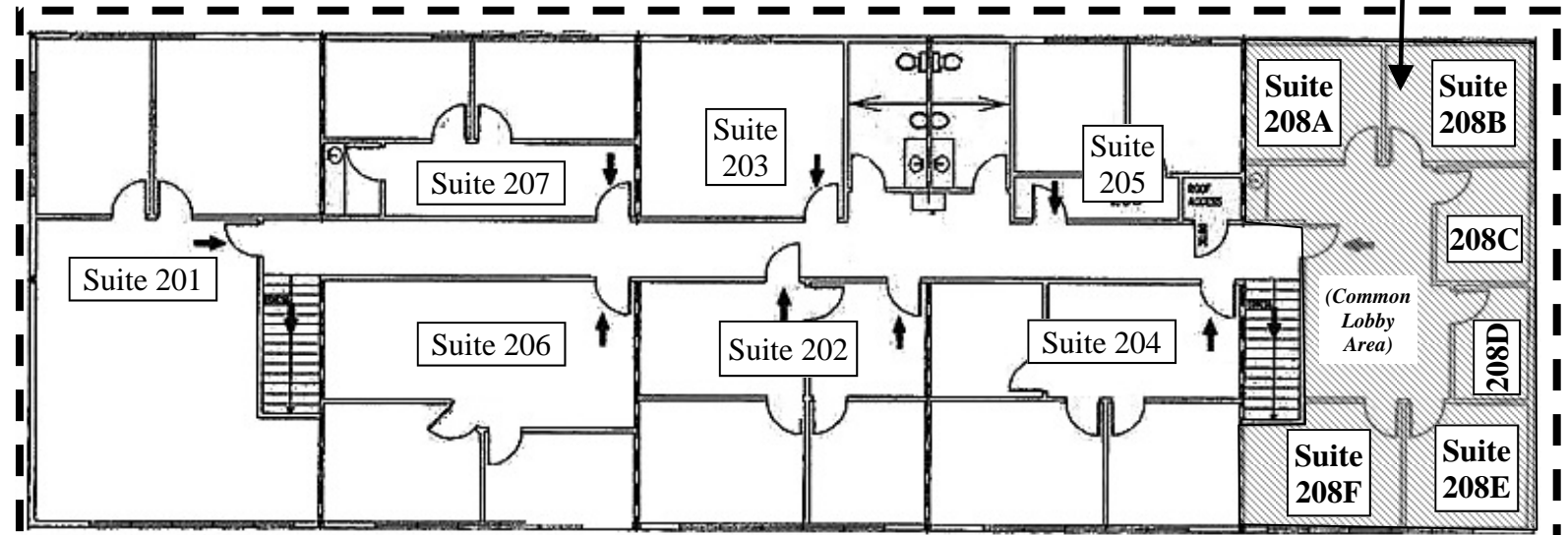
ADDRESS CHRONOLOGY

- Assignment of Suite 208 A to 208F and rescinding of Suite 208: 8/12/2019 (RW)

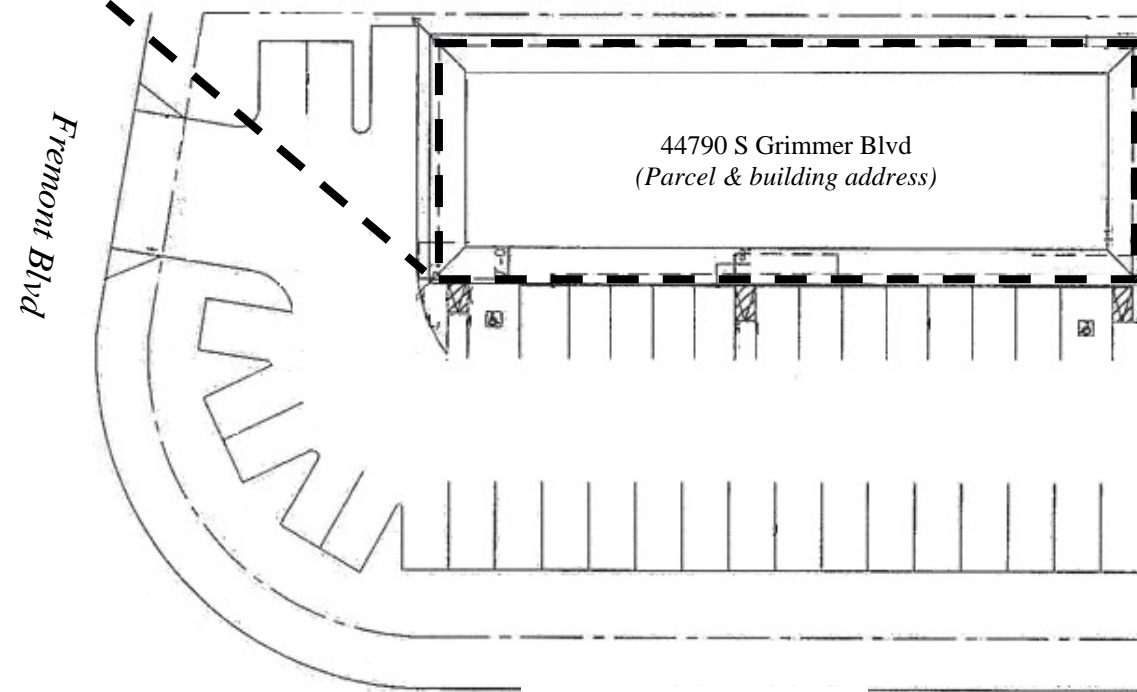
Building Address:

44790 S Grimmer Blvd is the assigned street address for all suites.

NEW
44790 S Grimmer Blvd
Suites 208A to 208F
(new tenant spaces)



(Showing Second Floor level of 44790 S. Grimmer Blvd.)



S Grimmer Blvd

Note: Based on the City's Addressing Guidelines, suite numbers shall be in a sequential pattern (*i.e., proceeding from low to high*) with even numbers on one side and odd numbers on the other side. However, it is recognized that some existing suite numbers for this building are out of sequential order. Please note that this may cause a problem with public safety response. It is advised that as these suites are vacated you contact the City for the issuance of new suite numbers.

Schematic floor plans showing the location of the tenant spaces and their suite numbers shall be posted near the stairs. The posted plan is subject to the review and approval of the Fire Department and/or the Building & Safety Division of Community Development Department as appropriate.

FOR ADDRESSING PURPOSES ONLY

SP78-0241 8/12/2019 (RW)

