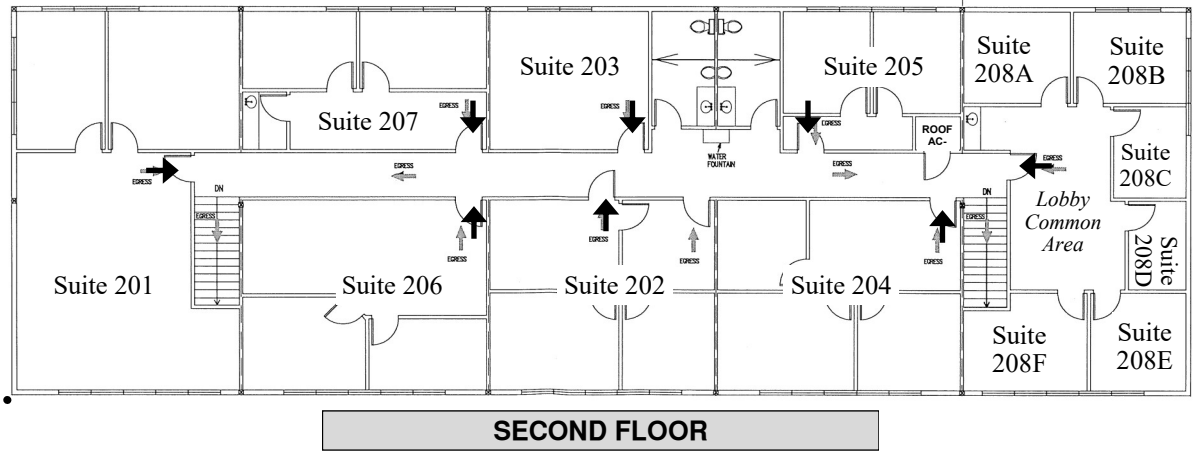
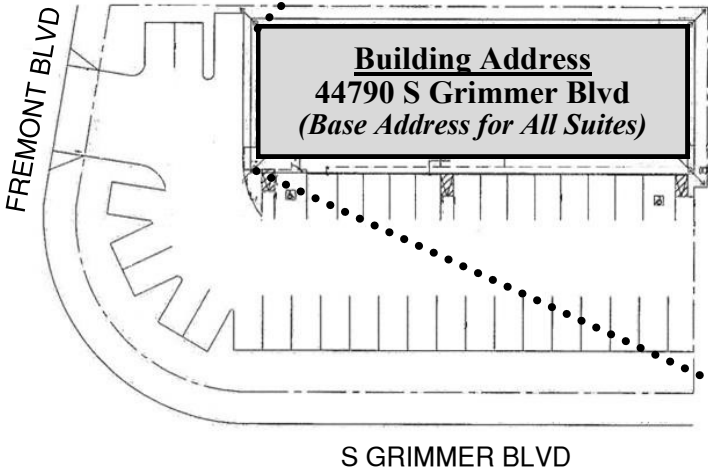
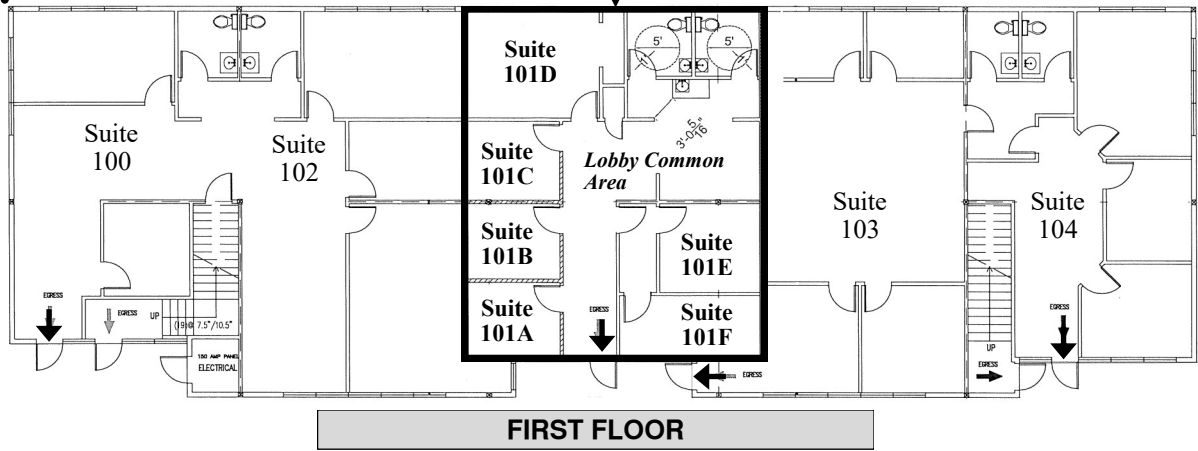




- ADDRESS CHRONOLOGY**
- Assignment of Suites 208 A to 208F and rescinding of Suite 208: 8/12/2019 (RW)
 - Assignment of Suite 101: 2/7/2020 (RC)
 - Assignment of Suites 101A to 101F; and rescinding of Suite 101: 4/24/2020 (RC)

Note: Schematic floor plans showing the location of the tenant spaces and their suite numbers shall be posted near the stairs. The posted plan is subject to the review and approval of the Fire Department and/or the Building & Safety Division of Community Development Department as appropriate.

New
44790 S Grimmer Blvd
Suites 101A to 101F
(new tenant spaces)



FOR ADDRESSING PURPOSES ONLY
 SP78-0241 4/24/2020 (RC)

Legend
 Main Entrance