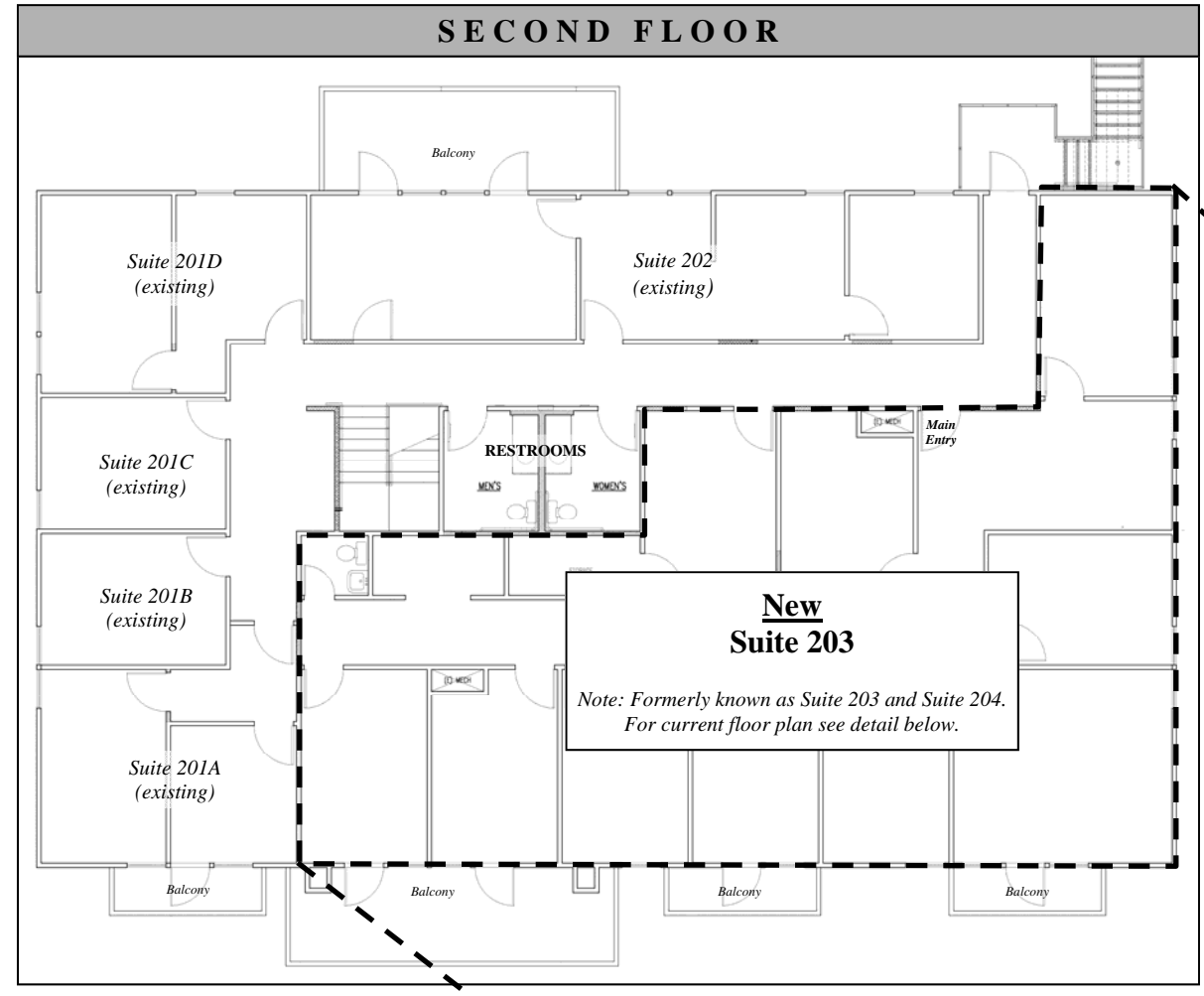
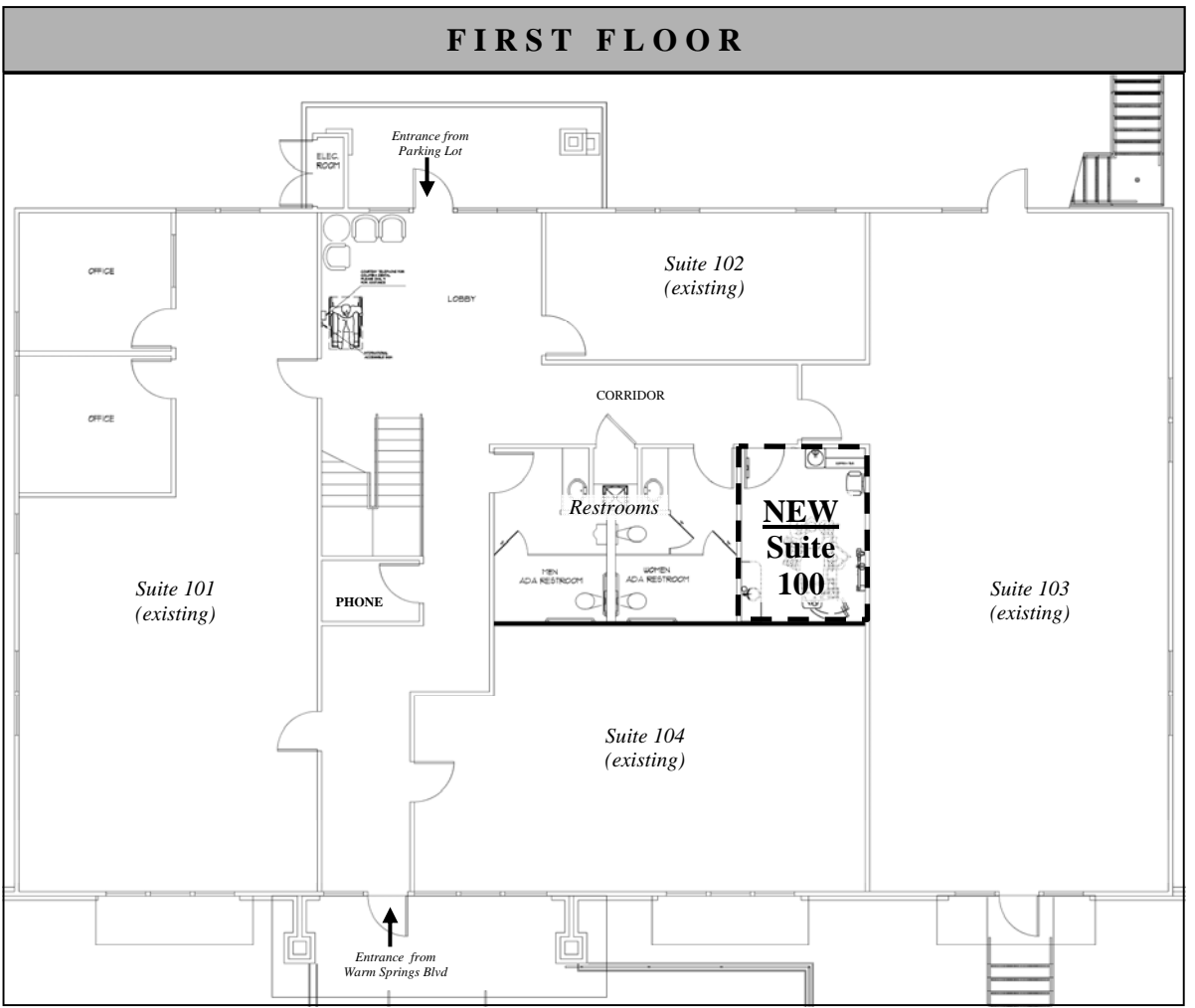


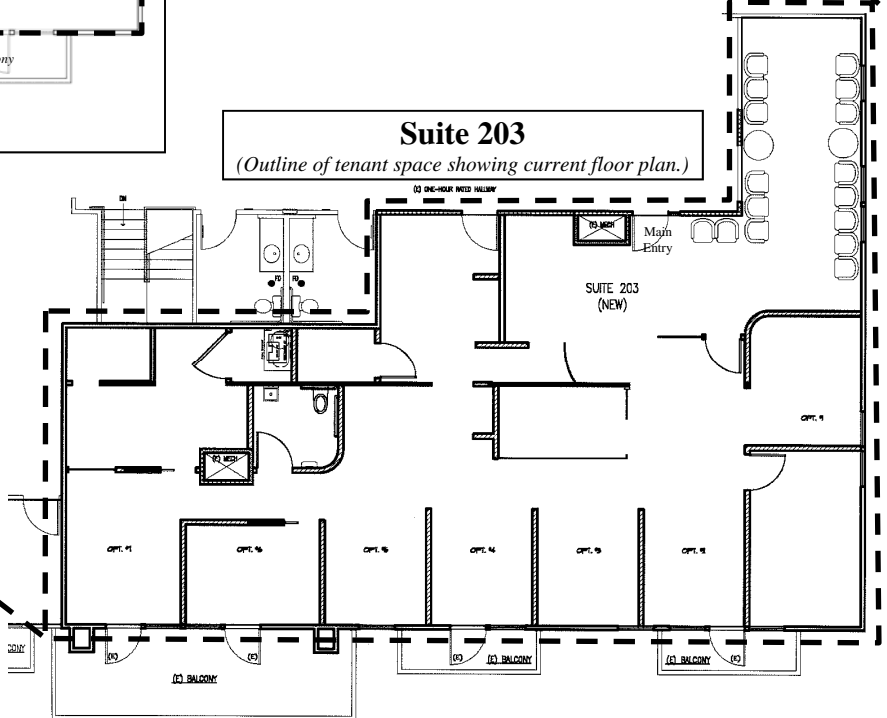
LOCATIONAL MAP

ADDRESSING CHROLOGY:

- Initial addressing at time of original development - assignment of 46921 Warm Springs Blvd: 1/10/1984
- Assignment of eight (8) suite number tenant space addresses for a reconfigured existing two-story building: 11/13/2008
- Assignment of four (4) new suite numbers for a reconfigured tenant space (i.e. 201A, 201B, 201C and 201D); and rescind one (1) existing no longer used suite number (i.e. 201): 3/25/2010 (RC)
- Combining two existing tenant spaces into one (i.e., combined Suite 203 and Suite 204 to create larger Suite 203). And, creation of new tenant space from former storage room (Suite 100): 1/9/2014 (RW)



New Suite 203
 Note: Formerly known as Suite 203 and Suite 204.
 For current floor plan see detail below.



Suite 203
 (Outline of tenant space showing current floor plan.)

NOTE:
 1) Building and parcel address: 46921 Warm Springs Boulevard
 2) For current configuration of tenant spaces, refer to building permit records.



FOR ADDRESSING PURPOSES ONLY

SP84-0010 1/9/2014 (RW)